

TOP Culinary hike "From course to course"

↔ 17.4 km | ⌚ 5:15 h | ▲ 487 m | ▽ 705 m | Difficulty moderate



Base Map: outdooractive Cartography; ©OpenStreetMap (www.openstreetmap.org) Geo data © swisstopo

TOP Culinary hike "From course to course"

↔ 17.4 km

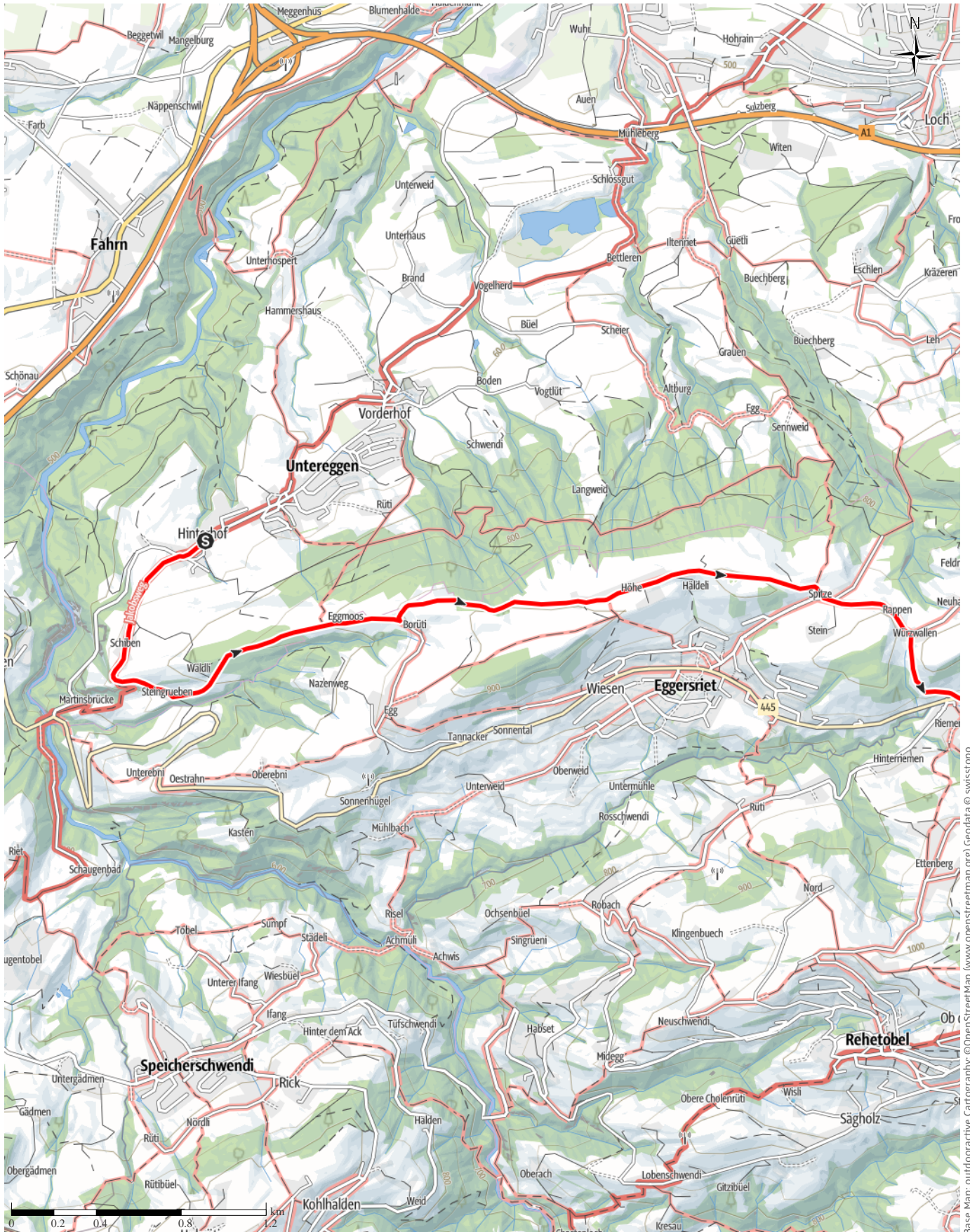
🕒 5:15 h

▲ 487 m

▼ 705 m

Difficulty

moderate



Base Map: outdooractive Cartography: ©OpenStreetMap (www.openstreetmap.org) Geodata © swisstopo

TOP Culinary hike "From course to course"

↔ 17.4 km

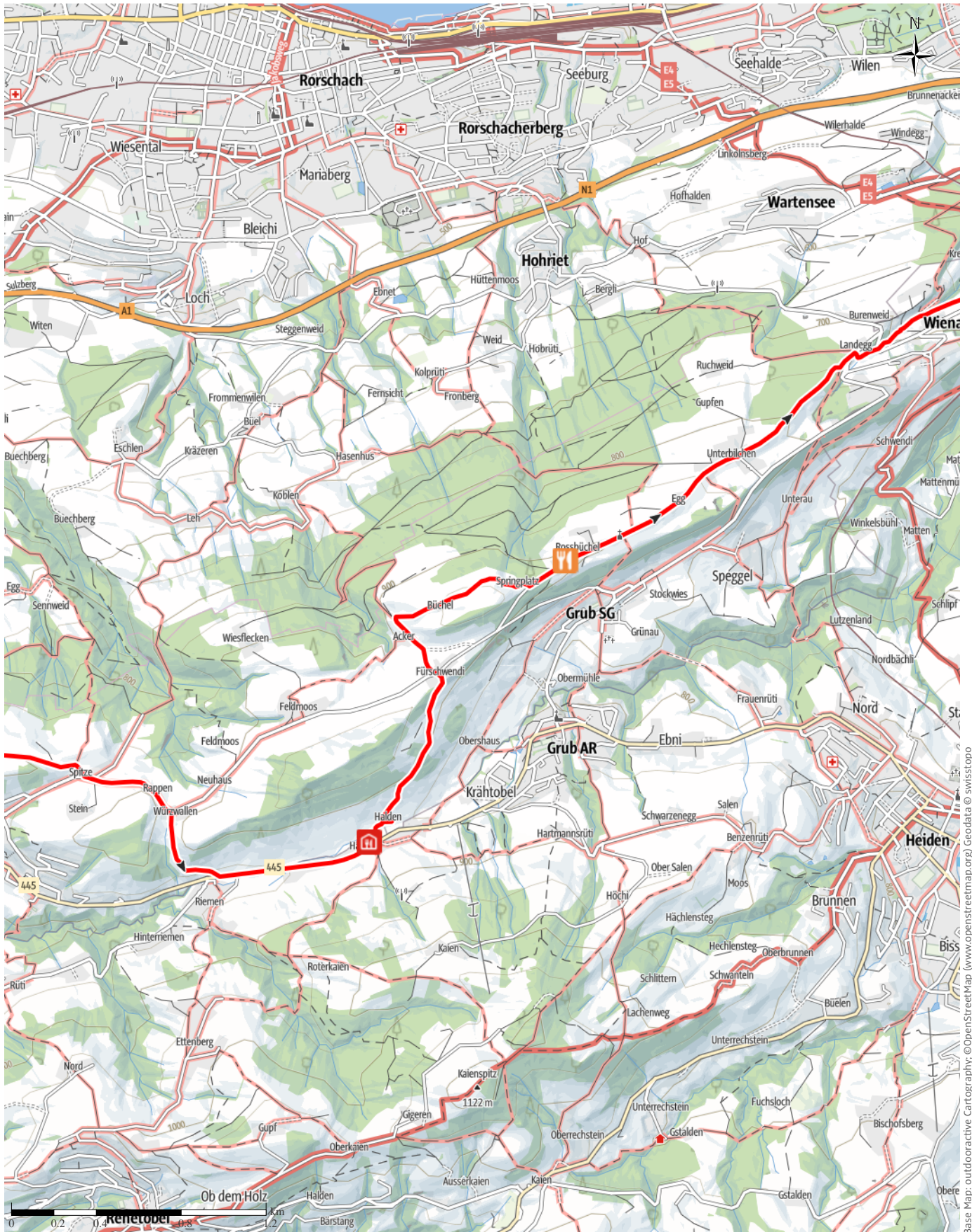
🕒 5:15 h

▲ 487 m

▼ 705 m

Difficulty

moderate



Base Map: outdooractive Cartography. ©OpenStreetMap (www.openstreetmap.org) Geodata © swisstopo

TOP Culinary hike "From course to course"

↔ 17.4 km

🕒 5:15 h

▲ 487 m

▼ 705 m

Difficulty

moderate



Base Map: outdooractive Cartography. ©OpenStreetMap (www.openstreetmap.org) Geodata © swisstopo

TOP Culinary hike "From course to course"

↔ 17.4 km

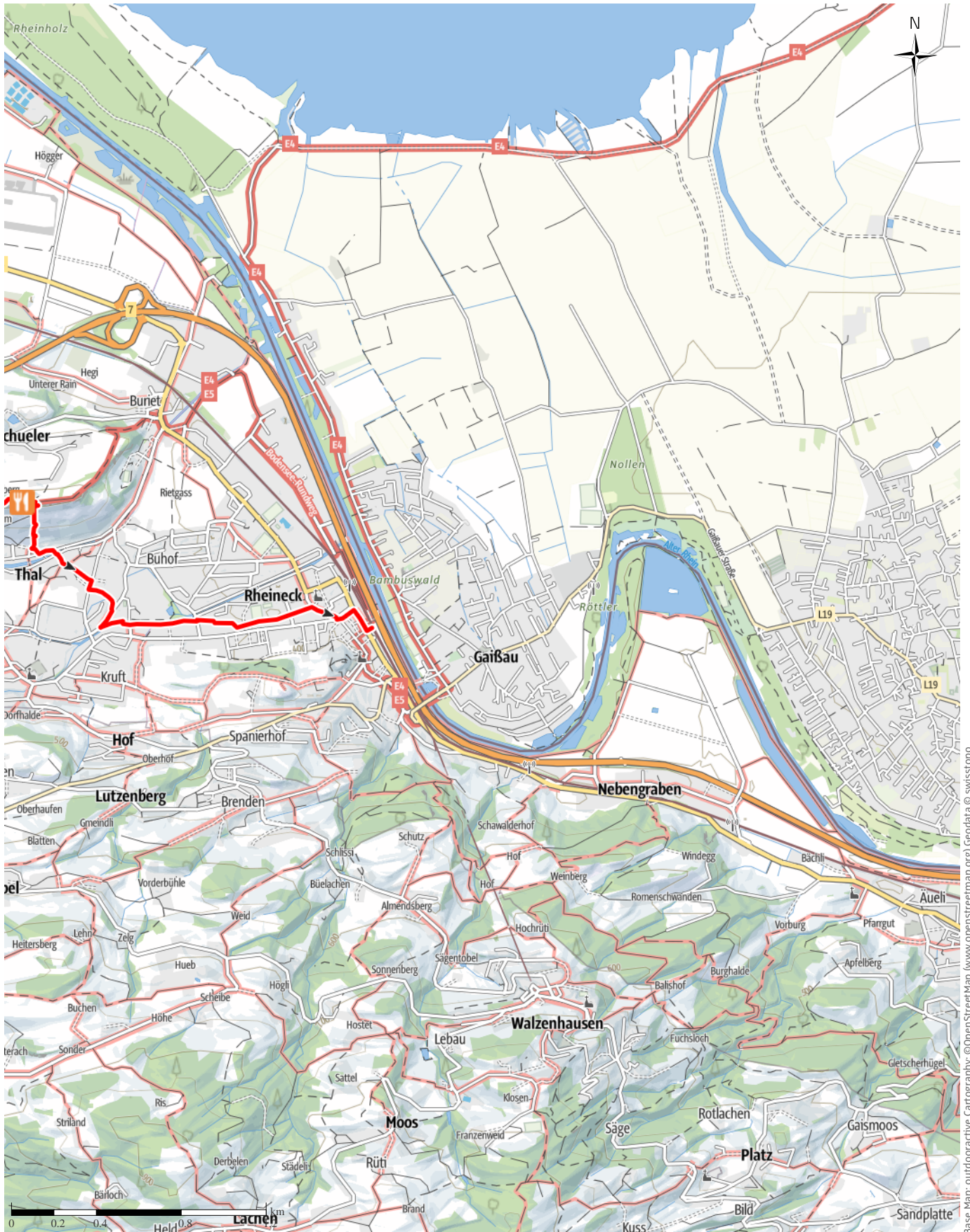
🕒 5:15 h

⬆️ 487 m

⬆️ 705 m

Difficulty

moderate



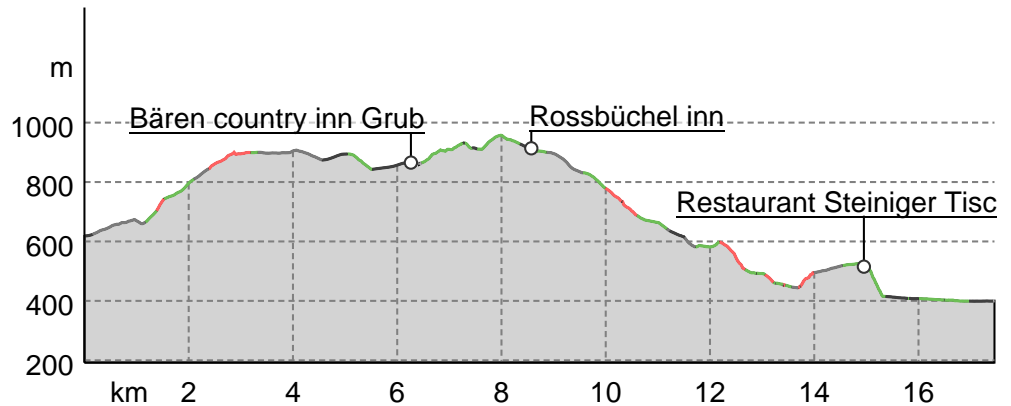
Base Map: outdooractive Cartography. ©OpenStreetMap (www.openstreetmap.org) Geodata © swisstopo

TOP Culinary hike "From course to course"

Track types

Asphalt	4.3 km
Forested/wild trail	7.4 km
Path	2.5 km
Road	3.1 km
Unknown	0.1 km

Elevation profile



route data

Hiking route

Distance	↔	17.4 km
Duration	🕒	5:15 h
Ascent	⬆️	487 m
Descent	⬇️	705 m

Difficulty: moderate

Stamina: ●●●●●●

Technique: ●●●●●●

Altitude: 957 m / 399 m

Best time of year

JAN	FEB	MAR
APR	MAY	JUN
JUL	AUG	SEP
OCT	NOV	DEC

Ratings

Authors: ●●●●●●

Experience: ●●●●●●

Landscape: ●●●●●●

More route data

Properties

Public-transport-friendly	Linear route
Scenic	Insider tip

Flora

Awards

- 🍷 Refreshment stops available
- 👨👩👧👦 Family-friendly

St.Gallen-Bodensee Tourismus
Update: March 31, 2023



Source
St.Gallen-Bodensee Tourismus
Bankgasse 9
9001 St.Gallen
Phone +41 71 227 37 37
Fax +41 71 227 37 67
info@st.gallen-bodensee.ch
http://www.st.gallen-bodensee.ch

A varied hike from St.Gallen to the Rhine, with a panoramic view of Lake Constance and the lakeside landscape.

A panoramic tour with culinary stops awaits you on the hike "From Course to Course". The route starts at the bus stop "Hinterhof" in Untereggen and takes you across flowering meadows and through forests to the Eggersrieter Höhe. Enjoy a breathtaking view over Lake Constance before you reach the Restaurant Bären in Grub (canton of Appenzell Ausserrhoden) and are treated to a generous starter. Shortly before the observation deck of the five regions, you reach the Wirtschaft Rossbüchel restaurant. Take a well-deserved break and enjoy the delicious main course. The next stage starts directly with a highlight: from the observation deck, you can enjoy a unique view over Lake Constance, the Bregenz Forest and the Alpstein. Now descend to the Restaurant Steiniger Tisch, where a well-deserved dessert awaits you with the best view

TOP Culinary hike "From course to course"

over the Thal vineyards. The last stage ends at the Rheineck train station where the local commuter train (S-Bahn) will take you back to St.Gallen in comfort. Book your Culinary hike "From Course to Course" hike here.

Author's recommendation

Are you immune to vertigo? Then take a short detour between starter and main course up to the suspension bridge that connects the town of Grub in the canton of Appenzell Ausserrhoden with the town of the same name in the canton of St.Gallen.

Equipment

- Festes Schuhwerk
- Regenschutz bei schlechter Witterung
- Voucher für die Restaurants (Den Voucher erhalten Sie mit der Buchungsbestätigung per E-Mail. Buchung unter www.st.gallen-bodensee.ch/kulinarische-wanderung)

Additional information**Tips and hints**

Book here:

<https://st.gallen-bodensee.ch/en/stories/culinary-hike.html>

Turn-by-turn directions**Starting point / trailhead**

Bus station Hinterhof, Untereggen

Coordinates:

DD: 47.448259, 9.439766

DMS: 47°26'53.7"N 9°26'23.2"E

UTM: 32T 533152 5255073

w3w: ///terminology.before.laws

Point of arrival

Train station Rheineck

Turn-by-turn directions

Bus station Hinterhof, Untereggen – Restaurant Bären, Grub AR – Wirtschaft Rossbüchel, Grub SG – Restaurant Steiniger Tisch, Thal – Train station Rheineck

Getting There

This route is conveniently accessible by public transport.

Public transport


Anreise: Bus Nr. 242ab St.Gallen, Bahnhof (Richtung Rheineck) um 8.48 Uhr bis Untereggen, Hinterhof (Ankunft um 9.04 Uhr)

Rückreise: Mit dem Zug (S4) ab Rheineck bis St.Gallen

Points of Interest**1 Bären country inn Grub**

Halten 112

9035 Grub

 +41 71 891 13 55

info@baeren-grub.ch


<http://www.baeren-grub.ch/>

Source: St.Gallen-Bodensee Tourismus

**2 Rossbüchel inn**

Rossbüchel 416

9036 Grub

 +41 71 891 20 20

email@rossbuechel.com

http://www.rossbuechel.com/?utm_source=sgbt.pim.tso.ch&utm_medium=Standard&utm_campaign=DestinationData

Source: St.Gallen-Bodensee Tourismus




"Author's advice"

**3 Restaurant Steiniger Tisch**

Felsenstrasse 4

9422 Staad SG

 +41 71 888 12 05

kontakt@steinigertisch.ch

http://www.steinigertisch.ch/?utm_source=sgbt.pim.tso.ch&utm_medium=Standard&utm_campaign=DestinationData

Source: St.Gallen-Bodensee Tourismus